



## Basic Data

<b>Vessel's type</b>	Landing craft
<b>Built</b>	2019 (Indonesia)
<b>Classification society*</b>	void

\*- The vessel was built under BKI (Indonesia) rules.

## General Characteristics

<b>LOA x Beam x Depth</b>	39.25 m x 8.05 m x 2.28 m
<b>Draught</b>	1.65 m
<b>Tonnage (BT / NT)</b>	275 / 83
<b>Clear deck area</b>	182.25 sqm (40' container x 4 + 20' container x 1)
<b>Deck strength</b>	7 t/sqm
<b>Speed</b>	12 knots (ME consumption: 2 x 66.2 l/hr; AUX consumption: 1 x 5 l/hr)
<b>Accommodation*</b>	1-berth x 2, 4-berth x 2

\*- Fitted with AC.

## Engine Room

<b>Main engine</b>	2 x CUMMINS / 350 bhp
<b>Reduction box</b>	2 x ADVANCE / 5:1
<b>Auxiliary engine</b>	2 x MITSUBISHI 4D33
<b>Generator</b>	2 x SPECTEK / 50 kVA

### Pumps:

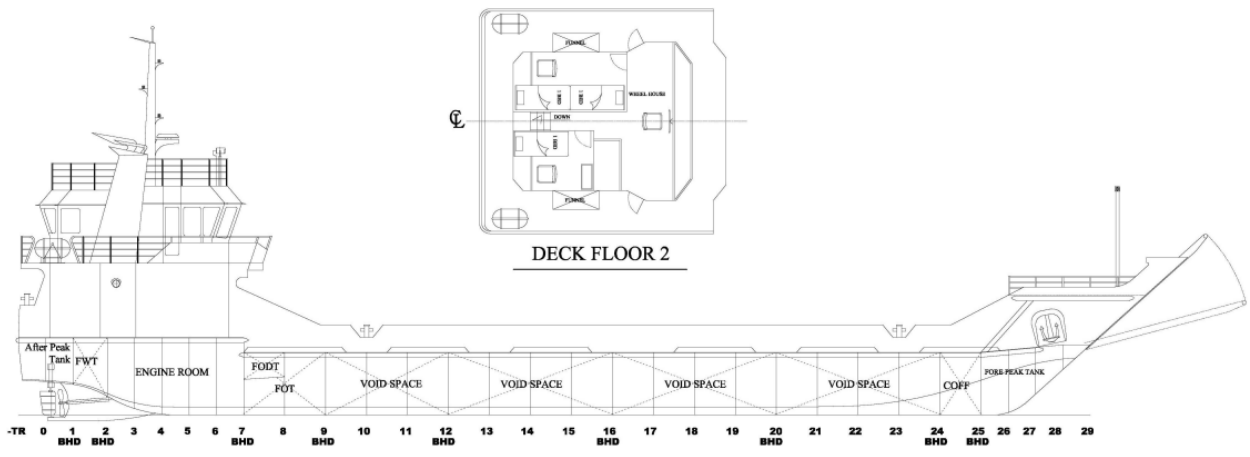
<b>General service pump</b>
<b>Fire pump</b>
<b>Fuel transfer pump</b>
<b>Bilge pump</b>
<b>Fresh water pump</b>
<b>Sea water pump</b>
<b>Oily water separator</b>

## Electronics

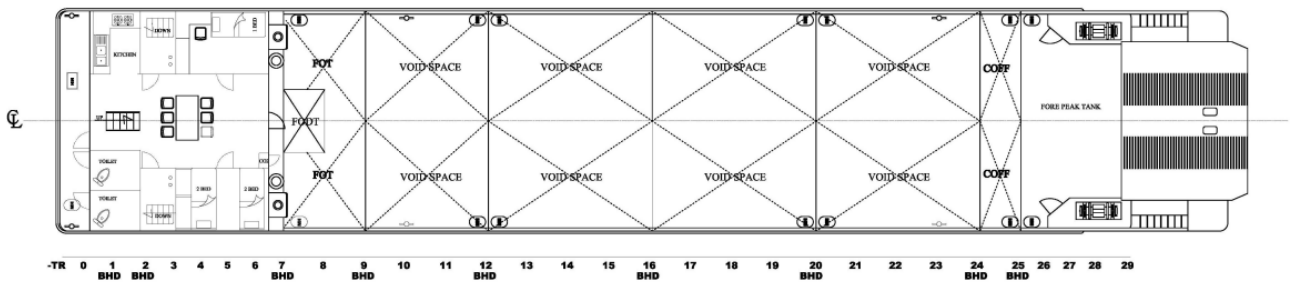
<b>VHF radio</b>	ICOM IC-M220
<b>SSB radio</b>	ICOM IC-M710
<b>GPS</b>	FURUNO GP-39
<b>AIS</b>	ICOM CLASS B
<b>Radar</b>	FURUNO 1715
<b>Echo sounder</b>	FURUNO FCV-688
<b>Compass</b>	DAIKO

## VariouS

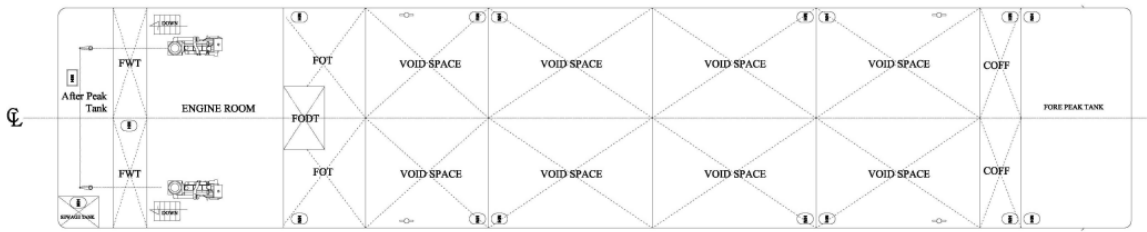
<b>CO2 system and other fire fighting equipment</b>
<b>Life-saving appliances (including 2 x 10-pers. raft)</b>
<b>Anchor equipment: 2 x windlass and 2 x anchor (360 kg)</b>



OUT BOARD PROFILE



MAIN DECK



PLAN BELOW MAIN DECK