



Russian Federation, Saint-Petersburg tel/fax: +7 (812) 635-06-56 e-mail: info@glob-ship.com web: www.globoxshipping.com

NAME: --
 TYPE: Purse seiner
 IMO NUMBER: --
 CALL SIGN: --
 FLAG: --
 YEAR BUILT: 1999 y. b.
 CLASS: Norwegian Maritime Directorate



Comments:

Rebuilt 2011, lengthened. 2011 - whole vessel sandblasted, metallized and painted.

DIMENSIONS AND CAPACITIES

Length overall	Breadth	Depth	Net tonnage	Gross tonnage	DWT	Light displacement
33,76 m	9,00 m	5,24 m	149 t	499 t	--	--

ENGINE DEPARTMENT

Equipment	Manufacturer	Model	Power output	Dimensions	RPM	Productivity
Main engine	Caterpillar	3508TAB	756 kW	--	--	--
AE (x2)	Caterpillar	3406TA	250 kW	--	--	--
AE	Cummins	KTA19DM	550 kW	--	--	--
Generator (x2)	--	--	306 kVA	--	--	--
Reduction gear	Mekanord	430 HS	--	--	--	6,53 : 1
Propeller	Helseth	--	--	ø 2,15 m	--	--
Steering gear	Ulstein Tenfjord	--	--	--	--	--
Side thruster (FWD)	Petter	S-100-330 S	250 BHP	--	--	--
Side thruster (AFT)	Ulstein	45TV	400 BHP	--	--	--

CARGO HANDLING AND MOORING GEAR

Equipment	Manufacturer	Model	SWL	Actuation	Wire/Rope size	Description
Net stacker	Triplex	--	--	--	--	--
Aux winch (x2)	Rapp Hydema	--	5 t	--	--	--
Split winch (x2)	Rapp Hydema	--	17,8 t	--	--	--
Fish pump	Rapp Hydema	--	--	--	--	14"
Deck crane	SM Triplex	KN10	--	--	--	--
Deck crane	Guerra	--	7 t	--	--	--

TANKS AND HOLDS

Name	Capacity	Use	Location	Metal	High level	Description
Cargo hold	500 m ³	Cargo storage	--	--	--	RSW tanks
FW tank	45 m ³	FW storage	--	--	--	--
FO tank	100 m ³	Fuel storage	--	--	--	--

NAVIGATIONAL EQUIPMENT

Modern set of electronics

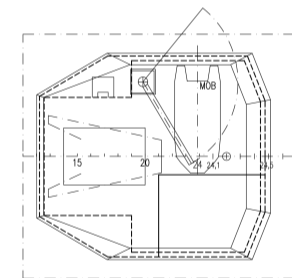
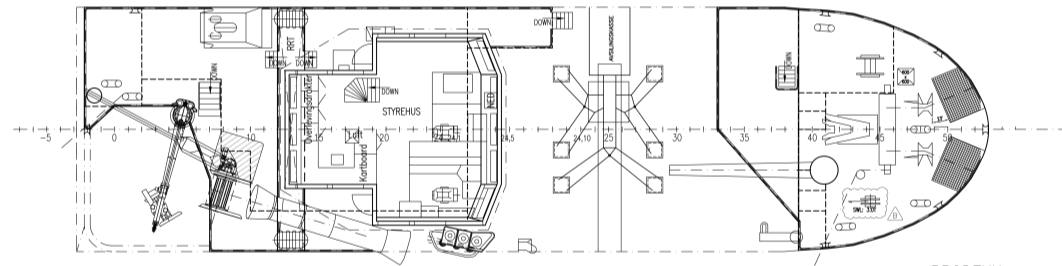
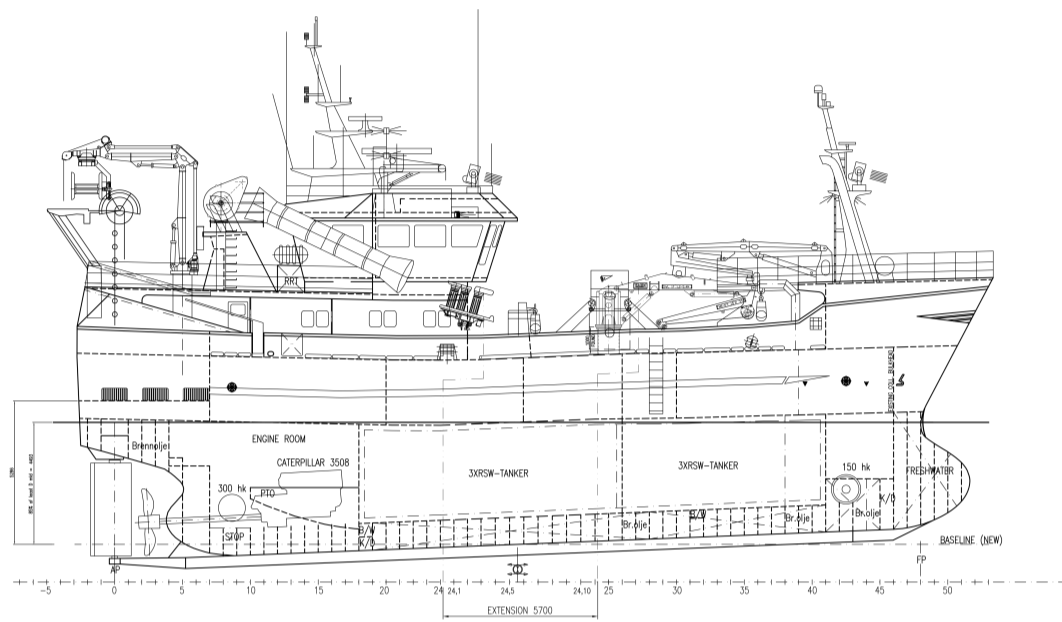
ACCOMODATION

Quantity of persons

12

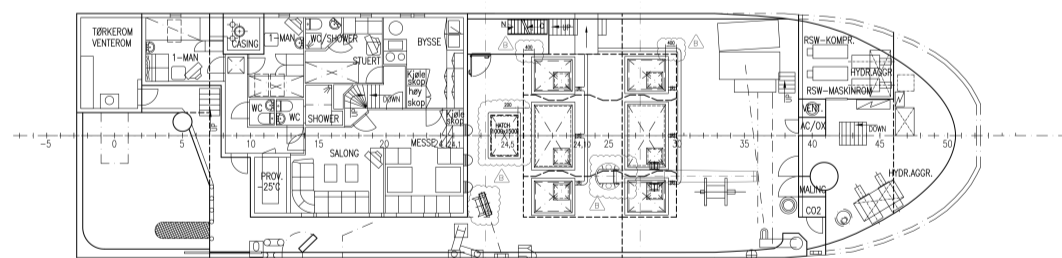
Quantity of cabins

8

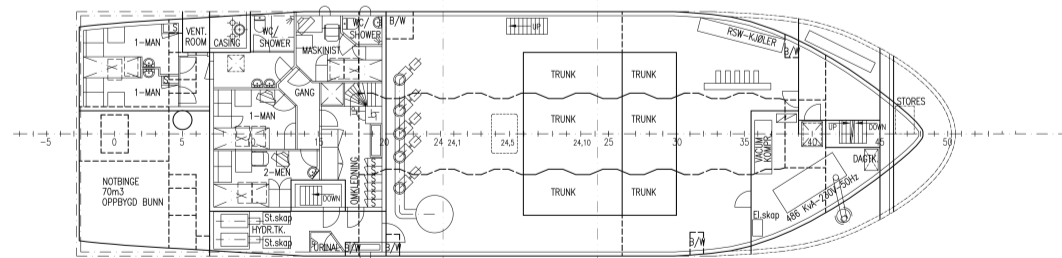


BRODEKK

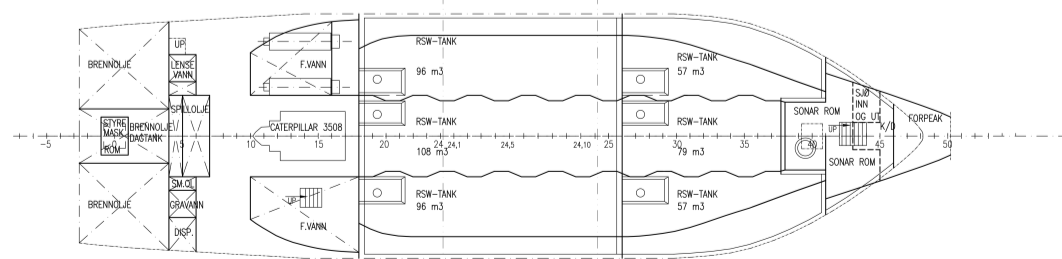
STYREHUSTAK



SHELTER DECK



MAIN DECK



UNDER MAIN DECK