



Russian Federation, Saint-Petersburg tel/fax: +7 (812) 635-06-56 e-mail: info@glob-ship.com web: www.globoxshipping.com

NAME: --  
 TYPE: Pelagic trawler / Seiner  
 IMO NUMBER: --  
 CALL SIGN: --  
 FLAG: --  
 YEAR BUILT: 2002 y. b.  
 CLASS: IACS member



Comments:

In 2008 lengthened by 8,4 m. Freezing hold enlarged + 2 new RSW tanks. In 2009 net bin enlarged to 300 m<sup>3</sup>. Freezing capacity: 140 t/24 hrs. Power plant equipped with PTI/PTO system, which allows to transfer the power from shaft generator to propeller. When PTO to propeller is 5800 kW, the vessel can achieve a 90 t bollard pull.

#### DIMENSIONS AND CAPACITIES

Length overall	Breadth	Depth	Net tonnage	Gross tonnage	DWT	Light displacement
83,80 m	14,60 m	7,00 m	--	3031 t	--	--

#### ENGINE DEPARTMENT

Equipment	Manufacturer	Model	Power output	Dimensions	RPM	Productivity
Main engine	MAN B&W	16V28/32A-DVO	5331 BHP	--	775	BP 90 t
AE (x3)	Mitsubishi	S12A2-MPTA	1021 BHP	--	--	--
Generator (x3)	AVK	DSG 62L2-4	900 kVA	--	1800	--
SG	AVK	--	2800 kVA	--	--	--
Reduction gear	Volda	ACG 950	--	--	--	5,23:1
Propeller	MAN B&W	VB 1080	5800 kW	--	147	--
Side thruster (FWD)	Brunvoll	--	900 BHP	--	--	--
Side thruster (AFT)	Brunvoll	--	1000 BHP	--	--	--
Steering gear	Tenfjord	SR622	--	--	--	--
Rudder	Barkemeyer	--	--	--	--	--

#### CARGO HANDLING AND MOORING GEAR

Equipment	Manufacturer	Model	SWL	Actuation	Wire/Rope size	Description
Trawl winch (x2)	Rapp Hydema	TWS-22060-C	80 t	--	3000 m / ø 36 mm	--
Purse seine winch (x2)	Rapp Hydema	TWS-4531 C	--	--	2000 m / ø 32 mm	--
Net drum	Rapp Hydema	ND-26000B	--	--	--	25 m <sup>3</sup>
Net sounder winch	Rapp Hydema	SOW-500-4,3	--	--	--	--
Net crane	Triplex	KN-50	3,3 t	--	--	--
Net crane	Triplex	NK-7500	6 t	--	--	--
Cod end winch	Triplex	SW-10000B	--	--	--	--
Net layer	Triplex	RN-75/85	--	--	--	--
Fish pump	Rapp Hydema	CP-3002-RHT	--	--	--	18"
Hose reel	Rapp Hydema	HHRL	--	--	--	2 x 90 m
Vacuum pump system	Optimar	--	--	--	--	--

## PROCESSING EQUIPMENT

Equipment	Manufacturer	Model	Description
Filleting machine (x4)	VMK	11	2002 y.
Filleting machine	VMK	11	2008 y.
Elevator (x5)	VMK	52	--
Automatic feeder (x5)	VMK	31	--
Head cutting machine (x5)	VMK	16	--
Skinning machine (x5)	VMK	440	--
Grader	Style	--	--

## FREEZING EQUIPMENT

Equipment	Manufacturer	Model	Description
Freezing plant	York	--	Ammonia
Plate freezer (x11)	Dybvad Stålinindustri	--	Freezing capacity: 140 t/24 hrs
Slurry/flake ice machine	York	--	60 t/24 hrs

## TANKS AND HOLDS

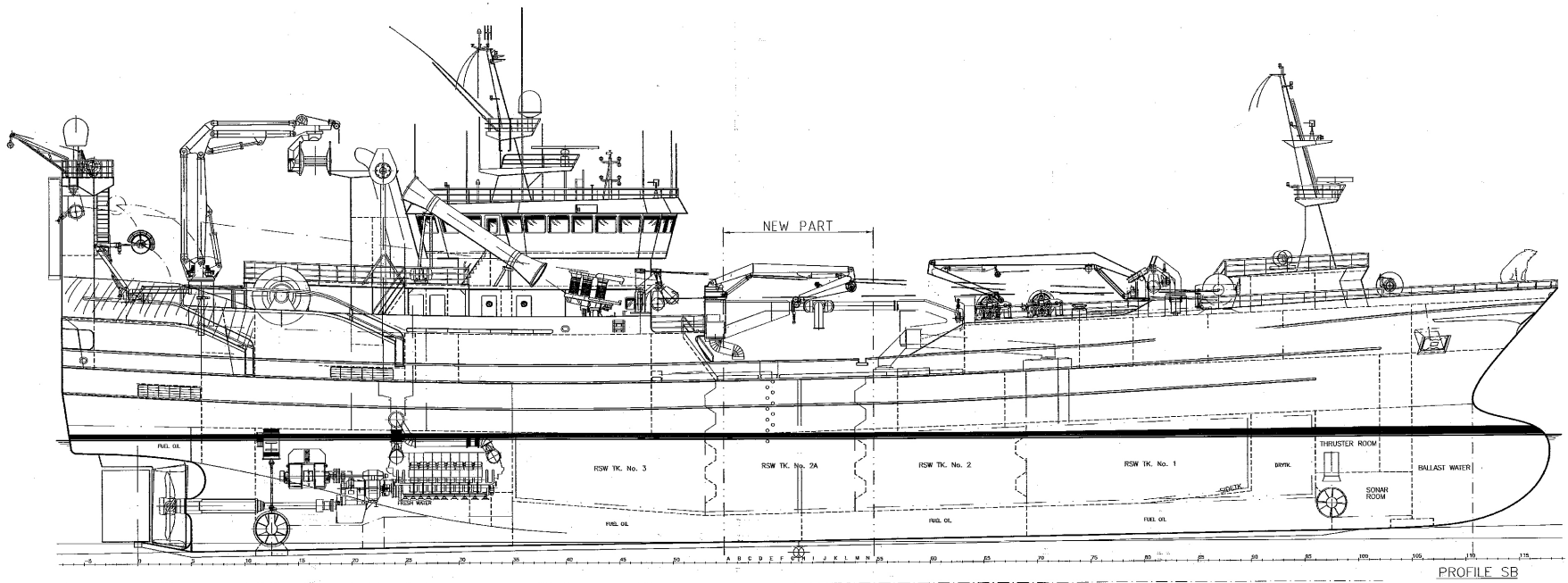
Name	Capacity	Use	Location	Metal	High level	Description
Cargo hold	1482 m <sup>3</sup>	Cargo storage	--	--	--	8 tanks RSW
Freezer hold (x2)	1045 m <sup>3</sup> (total)	Cargo storage	--	--	--	--
FW tank	170 m <sup>3</sup>	FW storage	--	--	--	--
FO tank	850 m <sup>3</sup>	Fuel storage	--	--	--	--

## NAVIGATIONAL EQUIPMENT

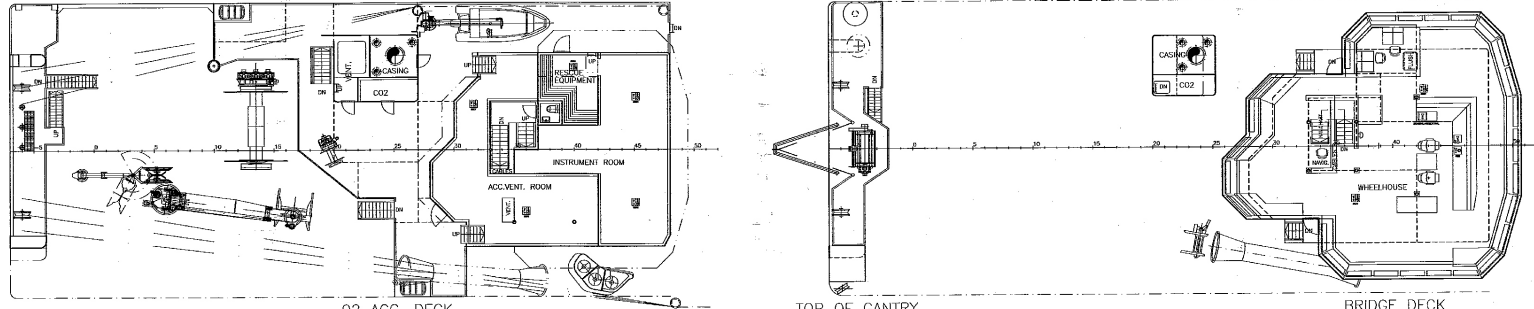
Modern set of electronics
---------------------------

## ACCOMODATION

Quantity of persons	Quantity of cabins
18	14 single; 2 double



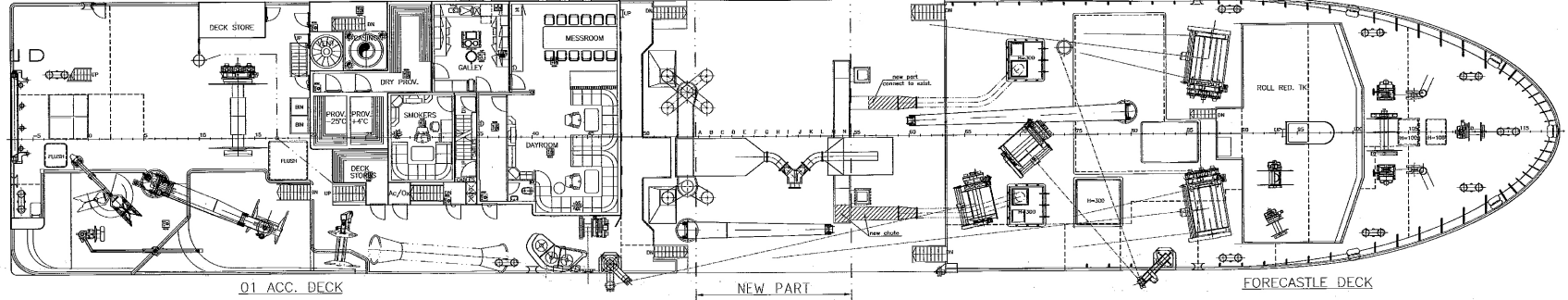
PROFILE SB



02 ACC. DECK

TOP OF GANTRY

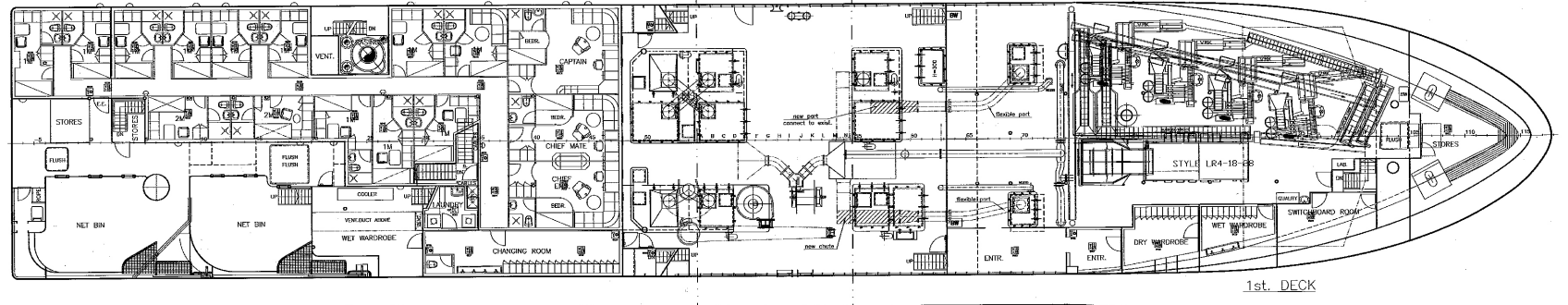
BRIDGE DECK



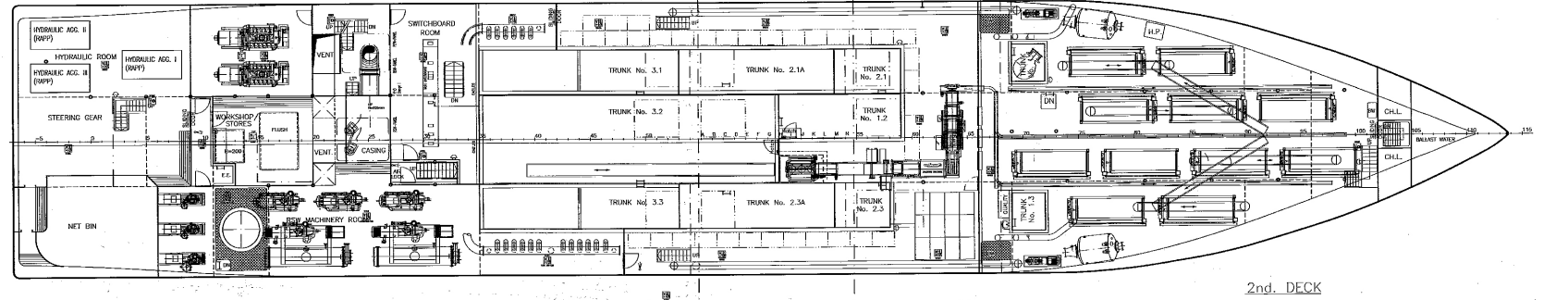
01 ACC. DECK

NEW PART

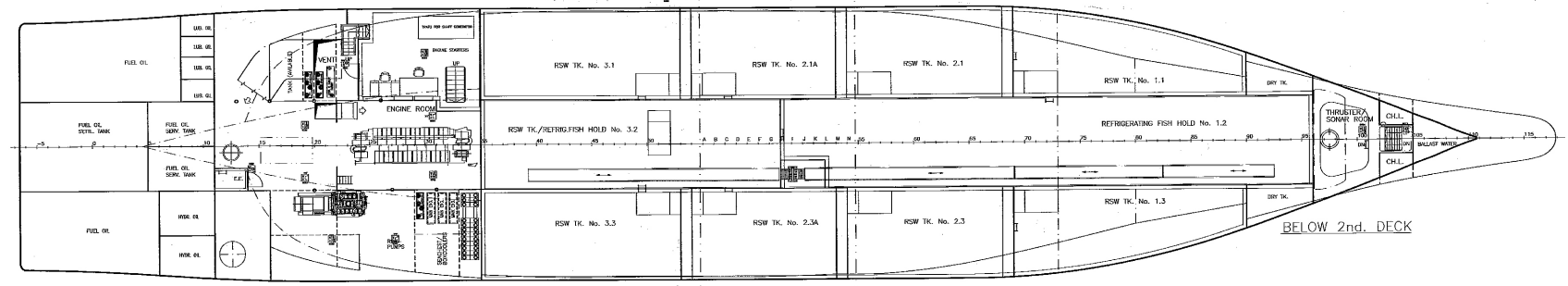
FORECASTLE DECK



1st. DECK



2nd. DECK



BELOW 2nd. DECK

PRINCIPAL PARTICULARS	
LENGTH OVER ALL:	83.80 m
LENGTH BETWEEN PERP:	74.80 m
BREADTH MOULDED:	14.60 m
DEPTH TO 1st. DECK:	9.00 m
DEPTH TO 2nd. DECK:	6.00 m
FRAME SPACING:	0.60 m

RSW TANK CAPACITIES	
FISH HOLD No. 1.1:	149.8 m <sup>3</sup>
FISH HOLD No. 1.3:	149.8 m <sup>3</sup>
FISH HOLD No. 2.1:	156.3 m <sup>3</sup>
FISH HOLD No. 2.3:	152.4 m <sup>3</sup>
FISH HOLD No. 2.1A:	204.9 m <sup>3</sup>
FISH HOLD No. 2.3A:	205.0 m <sup>3</sup>
FISH HOLD No. 3.1:	232.0 m <sup>3</sup>
FISH HOLD No. 3.2:	515.2 m <sup>3</sup>
FISH HOLD No. 3.3:	232.1 m <sup>3</sup>
<b>TOTAL CAPACITY:</b>	<b>1997.6 m<sup>3</sup></b>

FREEZING HOLD CAP.	
FISH HOLD No. 1.2:	535.4 m <sup>3</sup>
FISH HOLD No. 3.2:	515.2 m <sup>3</sup>
<b>TOTAL CAPACITY:</b>	<b>1050.6 m<sup>3</sup></b>

NEW PART