



Russian Federation, Saint-Petersburg tel/fax: +7 (812) 635-06-56 e-mail: info@glob-ship.com web: www.globoxshipping.com

NAME: --
 TYPE: Seismic Support Vessel
 IMO NUMBER: --
 CALL SIGN: --
 FLAG: --
 YEAR BUILT: 2004 y. b.
 CLASS: RINA; C Ⓢ



Comments:

The vessel was built for Dutch owners. Refurbished in 2006. Max speed: 13 knots (approx. consumption at max speed: 11,8 m³). Eco speed: 10,5 knots (approx. consumption at eco speed: 8,5 m³). Type of fuel used: MGO low sulphur. Endurance: 60 days. Bollard pull: 36,7 t.

DIMENSIONS AND CAPACITIES

Length overall	Breadth	Depth	Net tonnage	Gross tonnage	DWT	Light displacement
53,80 m	13,80 m	4,50 m	317 t	1058 t	--	--

Clear deck: 103 m²; 348 m² without deck equipment

ENGINE DEPARTMENT

Equipment	Manufacturer	Model	Power output	Dimensions	RPM	Productivity
Main engine (x2)	Caterpillar	3515	1575 BHP	--	1800	--
AE (x2)	Cummins	N4-DM	260 kW	--	--	--
EMDG (harbour)	Cummins	6CT8.3-D(M)	122 kW	--	--	--
Propeller (x2)	--	--	--	4 blades	--	--
Rudder (x2)	--	--	--	--	--	--
Side thruster (AFT)	Caterpillar	3412FFP	--	--	--	--
FW generator	--	--	--	--	--	4,8 m ³ /day

CARGO HANDLING AND MOORING GEAR

Equipment	Manufacturer	Model	SWL	Actuation	Wire/Rope size	Description
Deck crane	TTS	GP320	10 t	--	--	Swing: 15 m
Windlass	--	--	15 t	Hydraulic	--	--
Capstan	--	--	5 t	Hydraulic	--	--
A Frame	Davit	PLR-12004	12 t	--	--	--
Tugger winch	--	--	10 t	Hydraulic	--	--
Fuel hose reel	--	--	--	--	--	4"240 m
Dist. line reel	--	--	--	--	--	160 m
Cable reel	--	--	--	--	--	52 mm 8000 m
Reefers (x3)	--	--	--	--	--	20 ft container on deck
MOB crane	Sekwang M. M.	--	1,65 t	--	--	--

TANKS AND HOLDS

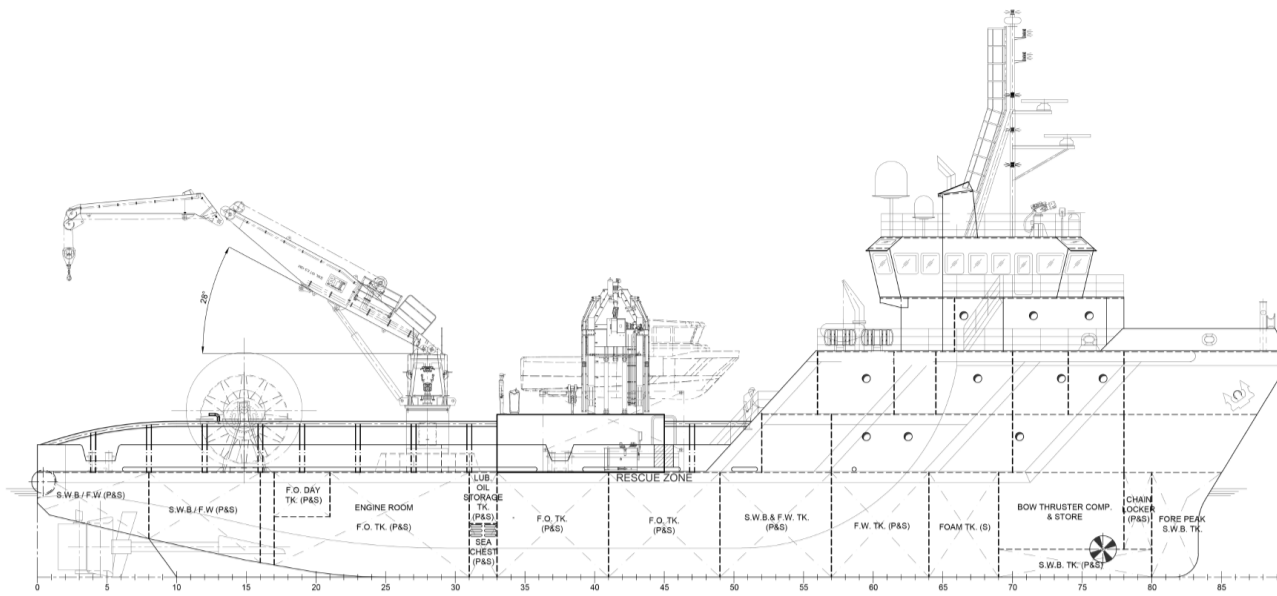
Name	Capacity	Use	Location	Metal	High level	Description
LO tank	11 m ³	LO storage	--	--	--	--
FW tank	158 m ³	FW storage	--	--	--	--
MGO tank	850 m ³	MGO storage	--	--	--	--
Cool store	7 m ²	--	--	--	--	--
Freeze store	6,2 m ²	--	--	--	--	--
Dry storage	56,45 m ³	--	--	--	--	--

NAVIGATIONAL EQUIPMENT

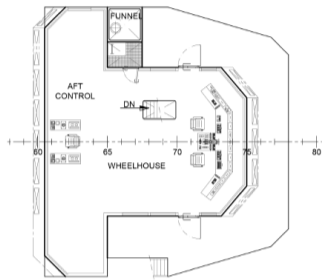
Equipment	Manufacturer	Model	Description
GMDSS	--	--	A1, A2, A3
VHF	Furuno	FM-8500C	--
Radar (x2)	Furuno	FAR-2117	--
Radar	Furuno	FR-7062	--
GPS	Furuno	GP-150 & GP-32	--
Navtex	Furuno	NX-500	--
MF/HF Radio	Furuno	FS-2575C	--
Gyro compass	Robertson	RGC-11	--
Autopilot (AFT)	Simrad	AP-50	--
Autopilot (FWD)	Simrad	AP-50	--
Anemometr	Furuno	RD-30	--
Portable VHF (x3)	Jotron Tron	TR20	--
VHF	Sailor	RT-6222	--
VHF	Sailor	RT-5022	--
Echo sounder	Furuno	FE-700	--
VHF	Icom VHF Marine	IC-M330	--
Electronic charts	Transas Navigator	--	--
Inmarsat Sat-C	Furuno	Felcom 15	--
Inmarsat Sat-C	Furuno	Felcom 18	--
AIS	Furuno	FA-100	--
Magnetic compass	Daiko Keiki	SR-150	--
Mini-M	Iridium	--	--

ACCOMODATION

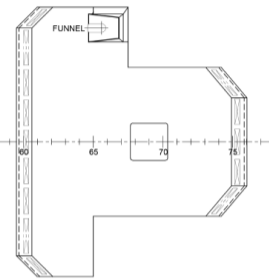
Quantity of persons	Quantity of cabins
9	4 x 1 pers.; 3 x 2 pers.; 4 x 4 pers.; 4 x 6 pers.



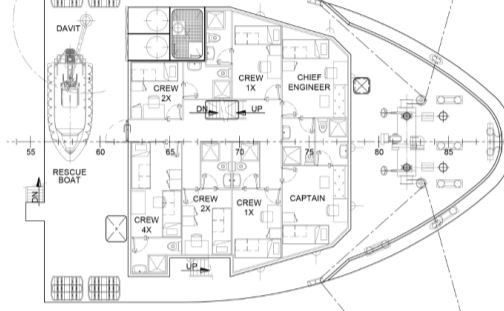
WHEELHOUSE DECK



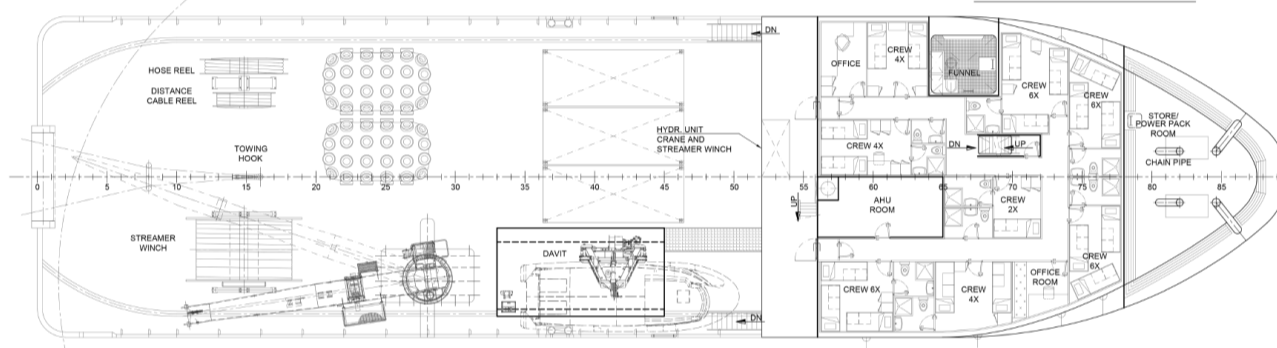
TOP DECK



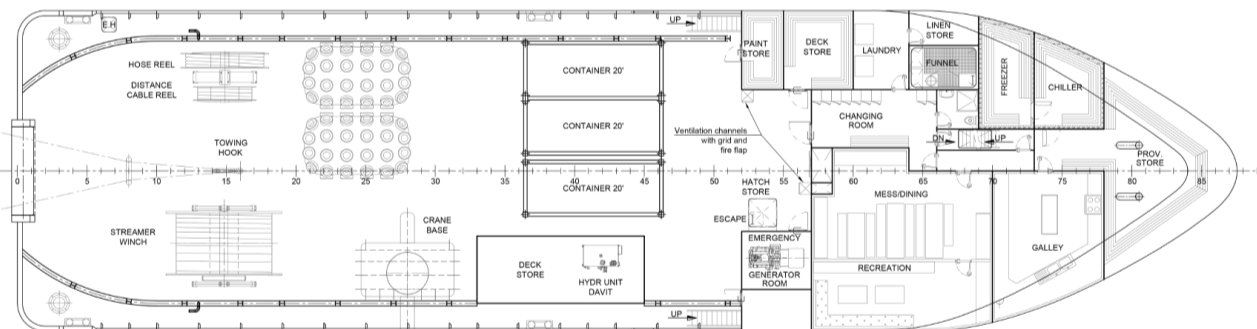
UPPER FORECASTLE DECK



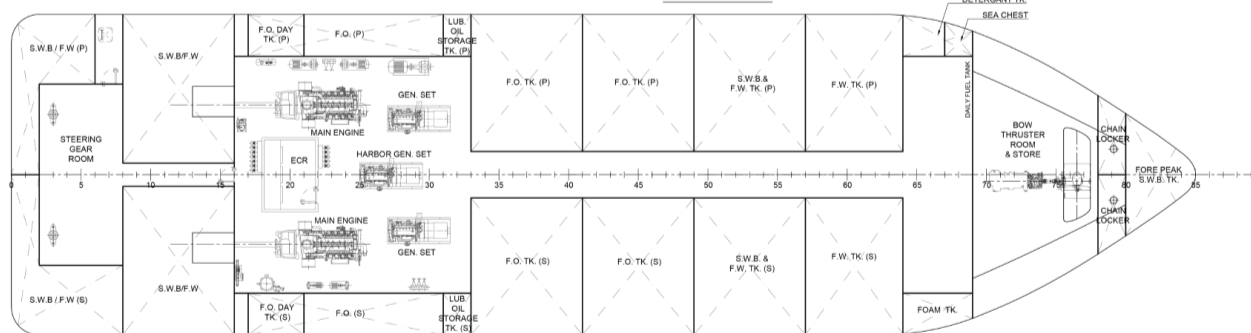
LOWER FORECASTLE DECK



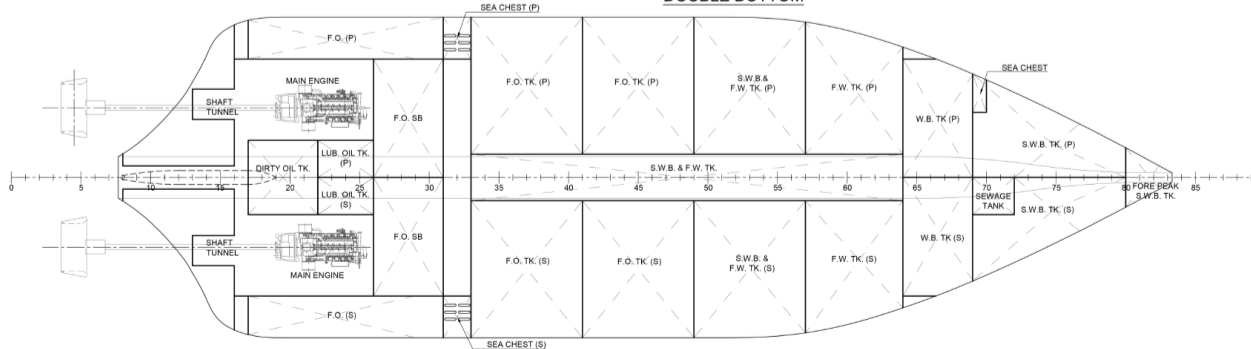
MAIN DECK



LOWER DECK



DOUBLE BOTTOM



PRELIMINARY

MAIN DIMENSIONS

LOA	: 53.80 [M]
L.WL	: 50.40 [M]
B (MOULDED)	: 13.80 [M]
DEPTH MLD.	: 4.50 [M]
DRAFT DESIGNED	: 3.00 [M]
DRAFT MAX.	: 3.80 [M]
COMPLEMENT	: 50 MEN